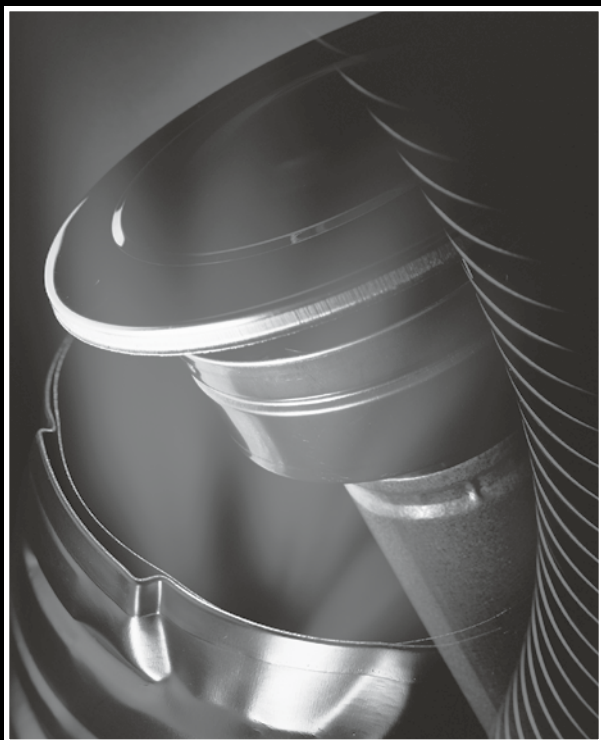


# PELLET VENT PRO



VENTING SYSTEM FOR  
PELLET AND CORN STOVES



COMPLETE VENTING SOLUTIONS FOR THE HEARTH INDUSTRY



SIMPSON DURA-VENT ANNOUNCES THE RELEASE OF PELLETVENT PRO™  
(US PATENT PENDING) JUNE 2006.

Since the introduction of pellet stoves in 1984, Simpson Dura-Vent has been recognized as the industry leader in venting systems for pellet stoves. Today, approximately 3 out of every 4 pellet stoves in the US and Canada are vented with a Simpson Dura-Vent pellet vent system.

PelletVent Pro allows the professional dealer to carry one venting product for both pellet- and corn-burning appliances. PelletVent Pro is available only through our extensive North American Specialty Hearth distribution network.

## ENGINEERED EXCELLENCE

The PelletVent Pro system features a double-wall, air-insulated design ensuring superior performance and safety. A 304 stainless steel laser welded inner wall, combined with a galvalume laser welded outer wall, provides superior heat and corrosion resistance for safe, long-lasting performance. A 1/4" air space between the inner and outer walls provides for static air insulation ensuring safe outer wall temperatures, while providing a 1" clearance to nearby combustibles.\*

Laser welded seam construction provides a precision fit, to eliminate fly ash leakage. All seams on elbows, tees, and fittings are factory sealed with high-temperature silicone.

PelletVent Pro is part of Simpson Dura-Vent's DuraPro Authorized Dealer Program product offering. PelletVent Pro is another reflection of Simpson Dura-Vent's fifty-year commitment to Engineered Excellence®. The introduction of PelletVent Pro is an integral part of Simpson Dura-Vent's strategy to provide complete venting solutions for the Specialty Hearth market.

## EASE OF INSTALLATION

Simpson Dura-Vent designed PelletVent Pro with the installer in mind. The precise fit of the twist-lock connection is fast, secure, and leak-resistant without the use of gaskets or sealants.

- No gaskets or sealants required.
- 1" clearance to nearby combustibles\*.
- The perfect fit and finish results in a clean, streamlined appearance.
- One product for both pellet- and corn-burning appliances.
- Laser-welded seams.
- Select components also available in black.
- Swivel Elbow connections.
- Horizontal and Vertical Termination Kits.
- New Adjustable Wall Strap (1" - 3").
- Directional Round Horizontal Cap that rotates 360°.
- Limited Lifetime Warranty.

## LISTED BY UNDERWRITERS LABORATORIES

- PelletVent Pro is approved by UL and ULC.
- Tested and listed to UL 641 Standard, file #MH8381 and #MH14420.
- Tested and listed to the ULC S609 and ULC/ORD-C441 standards, file #CMH1439 and #CMH1440.

## APPLICATIONS

The PelletVent Pro System, offered in 3" and 4" diameters, is designed for use with pellet stoves, low-temperature venting systems, and it is also designed to withstand corrosive flue gasses of corn-burning appliances. PelletVent Pro is rated for continuous flue temperatures up to, but not exceeding, 570 °F.

PelletVent Pro is not interchangeable with standard PelletVent or CornVent.

\* In Canada, a 3" clearance is required to combustibles for pellet- and corn-burning appliances.

# PELLETVENT PRO® FOR STOVES BURNING PELLETS & CORN

## THE FINISHING TOUCH

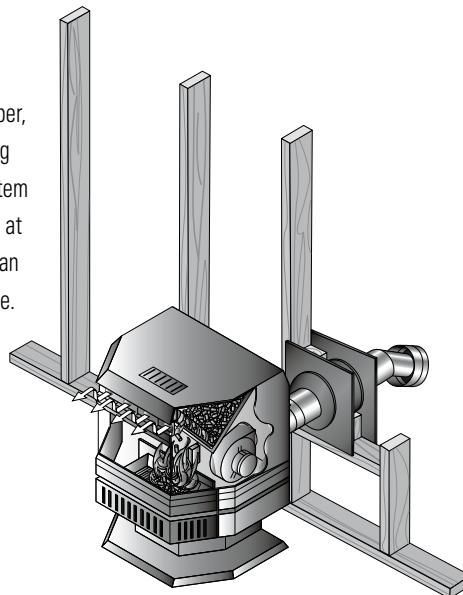
PelletVent Pro features a complete product offering, including wall thimbles for horizontal, through-the-wall installations and support boxes for both flat and cathedral ceiling installations. For the finishing touch, decorative wall thimbles and ceiling support covers are available with optional Designer Series brass trim accents. PelletVent Pro's complete product line is designed to make every installation a success.

## THE PELLET STOVE CONCEPT

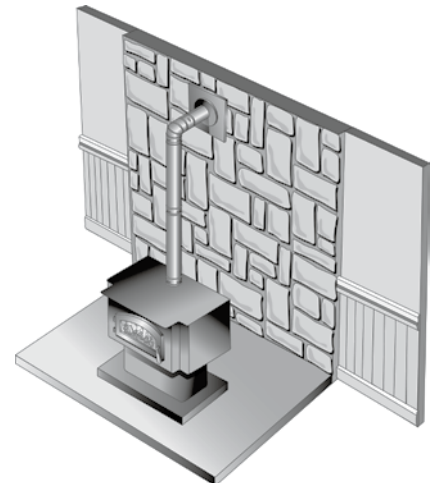
Pellet stoves offer the warmth and beauty of heating without the mess and chore of a typical wood-burning stove. They are also sensitive to the environment by using recycled wood waste and by producing the cleanest burning wood fire available. Pellet stoves offer the convenience of automatic feeding, thermostatic heat control, and self-lighting options.

Corn-burning stoves provide a convenient and economical option for heating. Corn-burning stoves are also environmentally sensitive and produce very low emissions, while utilizing a renewable and fast-growing fuel source. Like Pellet stoves, corn-burning stoves offer the same convenience of automatic feeding, thermostatic heat control, and self-lighting options.

The design of a pellet or corn-burning stove consists of a hopper, into which you simply pour a bag of pellets or corn. An auger system delivers the fuel to the burn pot at the rate you set. A convection fan delivers heat to warm your home.



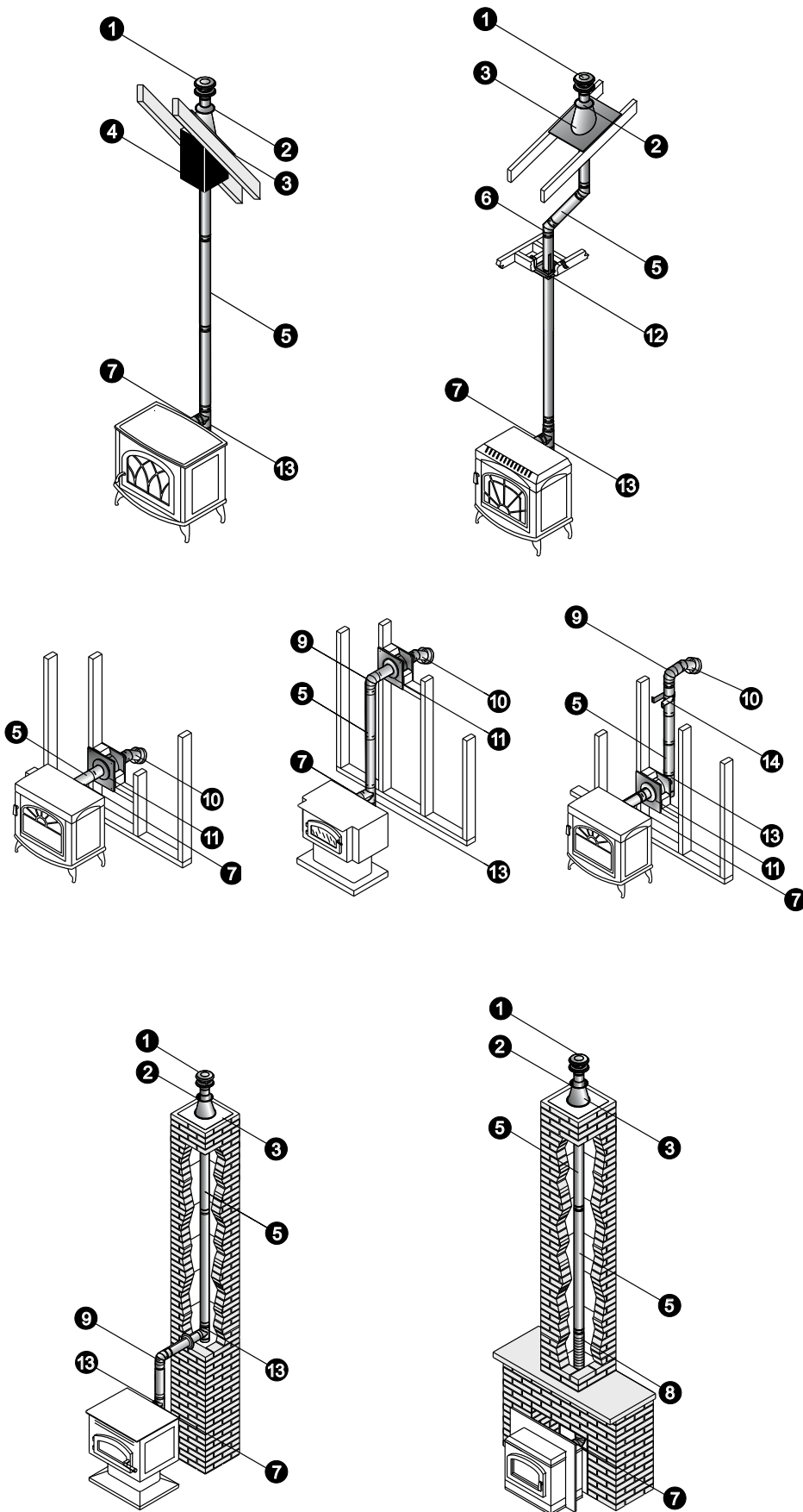
The rear surface of a pellet stove stays relatively cool, so close clearances to combustible walls is possible. While many pellet stoves can be vented with a short, horizontal vent directly out through an outside wall, most operate best with a minimum 4' rise before the flue vents horizontally through the wall.



Pellet stoves are also available as fireplace inserts installed in masonry or factory-built metal fireplaces. Since PelletVent Pro is smaller in diameter than normal chimneys, it can be installed as a chimney liner. A 60" length of stainless flex permits installation through the existing fireplace damper.

## PELLETVENT PRO

1	Vertical Cap
2	Storm Collar
3	Flashing
4	Cathedral Ceiling Support Box
5	Straight Length Pipe
6	45° Elbow
7	Appliance Adapter
8	60" Flexible Length
9	90° Elbow
10	Round Horizontal Cap
11	Wall Thimble
12	Ceiling Support Firestop Spacer
13	Tee w/Clean-Out Tee Cap
14	Wall Strap
15	Attic Insulation Shield



- Refer to our Typical Venting Installation drawings to select the appropriate component parts for your installation.

- The inner pipe diameter should match the outlet size of the appliance.

- Check the appliance manufacturer's installation instructions to confirm which types of vent configurations are permitted (i.e. horizontal, vertical, chimney reline, etc.). Also, check for any venting restrictions such as maximum horizontal run, minimum and maximum vertical rise, maximum offset, etc.

- Be fire-safe! Maintain the minimum clearances (air-space) between the vent pipe and nearby combustibles, as specified in the appliance manufacturer's installation instructions. Use proper support and bracing. Follow local building codes and have your venting system inspected.

## HOW TO PLAN YOUR CHIMNEY INSTALLATION

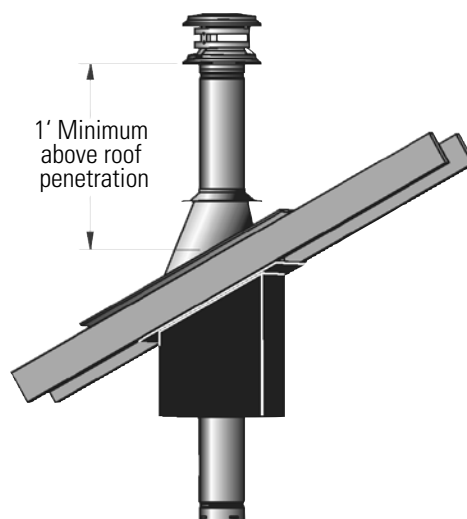
Step 1.	Refer to the Typical PelletVent Pro Installations diagram, on the opposite page, to be familiar with some of the standard PelletVent Pro installations and the required component parts.
Step 2.	For a horizontal termination, you will need a Wall Thimble and a Round Horizontal Cap. The cap must be installed with a 6" clearance to the outside wall and a 12" clearance off the ground.
Step 3.	For a vertical termination, you will need a Cathedral Ceiling Support Box or a Flat Ceiling Support, a Flashing, a Storm Collar, and a Vertical Cap.
Step 4.	Determine the length of PelletVent Pro pipe required. For a vertical termination, measure the pitch of the roof and select the proper flashing. The required minimum height above the roof is 12".
Step 5.	Pellet stove inserts in masonry fireplaces will require a flex pipe to snake the vent past the smoke shelf. For transition from PelletVent Pro to an existing DuraPlus, DuraPlus HTC, or DuraTech Chimney, a Chimney Adapter is available.
Step 6.	For vertical rise of PelletVent Pro on the outside of the house, Wall Straps should be used at 4' intervals to provide proper support.
Step 7.	Important! Check to be sure that the appliance and the venting system are in compliance with all minimum clearance to combustible requirements.

## CHIMNEY DESIGN RECOMMENDATIONS

The following design recommendations are intended only as a general guideline to assist in the design and selection of venting components for your installation. Read and follow the PelletVent Pro installation instructions before installing your venting system.

- Size the vent to meet the appliance manufacturer's specifications.
- Avoid long runs and excessive use of elbows. Refer to the appliance manufacturer for minimum rise and maximum run configurations for the venting system.
- Use a Appliance Adapter to ensure a proper connection to the appliance.
- Use a Single or Double Tee with Clean-Out Tee Cap to facilitate easy cleaning. Do not use a 90° elbow off the back of the appliance, unless authorized by the appliance manufacturer.
- Maintain the minimum 1" clearance\* (air space) from vent pipe to combustibles. Use proper support and bracing. Follow local building codes and have your venting system inspected. Be fire-safe!

\* In Canada, a 3" clearance is required to combustibles for pellet- and corn-burning appliances.



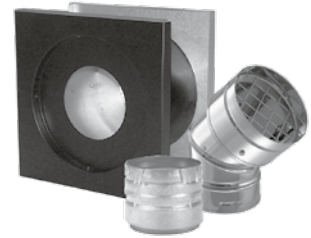
# TERMINATION KITS

## PELLETVENT PRO HORIZONTAL KIT

Use for horizontal installations. Kits include: Round Horizontal Cap, Wall Thimble (for 1" clearance), and Appliance Adapter\*. Pipe lengths not included.

\*4" Kit includes a 3" - 4" Appliance Adapter/Increaser. Painted black.

SIZE	STOCK #
3"	3PVP-KHA
4"	4PVP-KHA

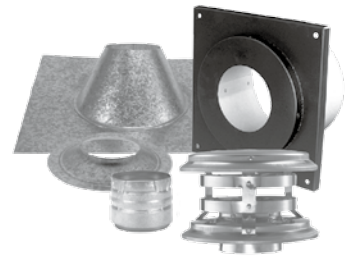


## PELLETVENT PRO VERTICAL KIT - FLAT CEILING

Use for vertical installations. Kits include: Vertical Cap, Storm Collar, Ceiling Support Firestop Spacer (for 1" clearance), Adjustable Flashing, and Appliance Adapter\*. Pipe lengths not included.

\*4" Kit includes a 3" - 4" Appliance Adapter/Increaser. Painted black.

SIZE	STOCK #
3"	3PVP-KVA
4"	4PVP-KVA

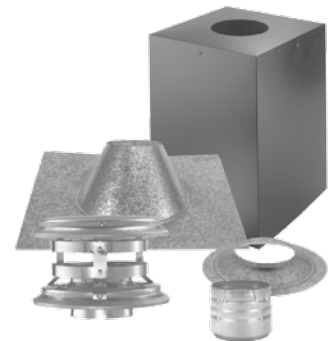


## PELLETVENT PRO VERTICAL KIT - CATHEDRAL

Use for vertical installations. Kits include: Vertical Cap, Storm Collar, Cathedral Ceiling Support Box, Adjustable Flashing, and Appliance Adapter\*. Pipe lengths not included.

\*4" Kit includes a 3" - 4" Appliance Adapter/Increaser. Painted black.

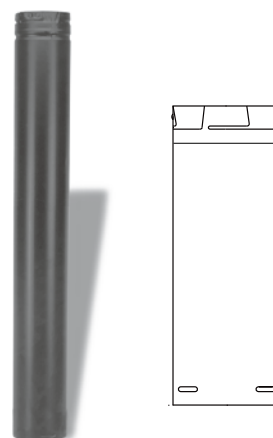
SIZE	STOCK #
3"	3PVP-KVB
4"	4PVP-KVB



## STRAIGHT LENGTH PIPE

Features fully unitized twist-lock construction in 3" and 4" diameters. Listed at 1" clearance to combustibles, in the USA, it can be used in both vertical and horizontal installations. 304 stainless steel welded seam inner wall, combined with a galvalume welded seam outer wall for pellet- or corn-burning appliances. Select components also available in black. Pipe OD is diameter plus 5/8".

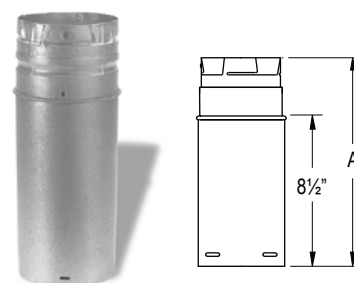
SIZE	3"	4"
6"	3PVP-06	4PVP-06
6" BLACK	3PVP-06B	4PVP-06
12"	3PVP-12	4PVP-12
12" BLACK	3PVP-12B	4PVP-12B
24"	3PVP-24	4PVP-24
24" BLACK	3PVP-24B	4PVP-24B
36"	3PVP-36	4PVP-36
36" BLACK	3PVP-36B	4PVP-36B
60"	3PVP-60	4PVP-60
60" BLACK	3PVP-60B	4PVP-60B



## ADJUSTABLE LENGTH PIPE

Use when a fixed length of PelletVent Pro is not appropriate. Provides 3" to 10" of adjustment when used with rigid sections of pipe.

SIZE	STOCK #	A
3"	3PVP-12A	12"
3" BLACK	3PVP-12AB	12"
3"	3PVP-18A	18"
3" BLACK	3PVP-18AB	18"
4"	4PVP-12A	12"
4" BLACK	4PVP-12AB	12"
4"	4PVP-18A	18"
4" BLACK	4PVP-18AB	18"



## FLEX PIPE

Use only inside a masonry chimney. 60" flex section, type 304 stainless steel, allows for offsets in masonry chimney for pellet and corn-burning appliances. For masonry relining, see also DuraFlex SS product offering.

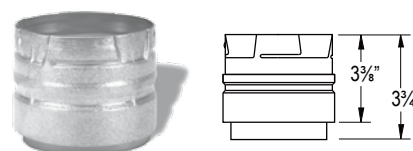
SIZE	STOCK #
3"	3PVP-60F
4"	4PVP-60F



## APPLIANCE ADAPTER

Attaches to appliance outlet allowing pipe to easily connect or disconnect. Use for either horizontal or vertical installations.

SIZE	STOCK #
3"	3PVP-AD
3" BLACK	3PVP-ADB
4"	4PVP-AD
4" BLACK	4PVP-ADB

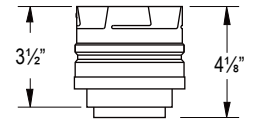




## APPLIANCE ADAPTER/INCREASER

Connects to appliance outlet. Allows connection of 4" vent to 3" appliance outlet. Use for either horizontal or vertical installations.

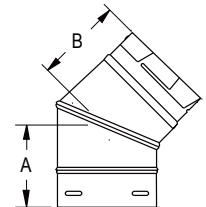
SIZE	STOCK #
3"	3PVP-X4AD
3" BLACK	3PVP-X4ADB



## 45° ELBOW

Use to offset pipe diagonally or horizontally. Factory sealed to contain fly ash. Elbows swivel 360° at base. Angle not adjustable.

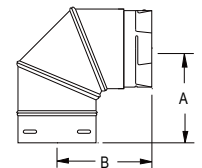
SIZE	STOCK #	A	B
3"	3PVP-E45	3 7/8"	4"
3" BLACK	3PVP-E45B	3 7/8"	4"
4"	4PVP-E45	3 7/8"	4"
4" BLACK	4PVP-E45B	3 7/8"	4"



## 90° ELBOW

Use to offset pipe diagonally or horizontally. Factory sealed to contain fly ash. Elbows swivel 360° at base. Angle not adjustable.

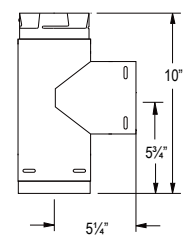
SIZE	STOCK #	A	B
3"	3PVP-E90	5 1/2"	5 1/2"
3" BLACK	3PVP-E90B	5 1/2"	5 1/2"
4"	4PVP-E90	5 1/2"	5 1/2"
4" BLACK	4PVP-E90B	5 1/2"	5 1/2"



## SINGLE TEE WITH CLEAN-OUT TEE CAP

Creates 90° offset with clean-out access. Twist-lock Clean-Out Cap allows easy access for cleaning.

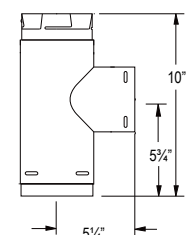
SIZE	STOCK #
3"	3PVP-T
3" BLACK	3PVP-TB
4"	4PVP-T
4" BLACK	4PVP-TB



## INCREASER TEE WITH CLEAN-OUT TEE CAP

Allows 3" branch to increase to 4" body and provides easy clean-out access.

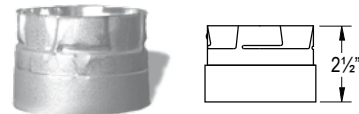
SIZE	STOCK #
4"	4PVP-T3
4" BLACK	4PVP-T3B



## CLEAN-OUT TEE CAP

Replacement Clean-Out Tee Cap for use with Tees.

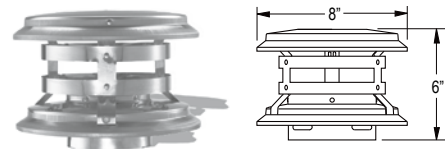
SIZE	STOCK #
3"	3PVP-CO
3" BLACK	3PVP-COB
4"	4PVP-CO
4" BLACK	4PVP-COB



## VERTICAL CAP

Required when pipe terminates above the roofline. Do not use for horizontal installations.

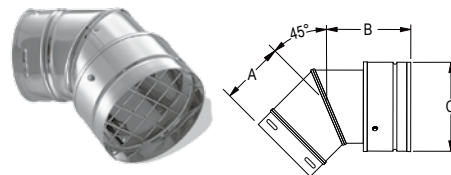
SIZE	STOCK #
3"	3PVP-VC
4"	4PVP-VC



## ROUND HORIZONTAL CAP

Use for horizontal terminations. Cap features a swivel collar to adjust exhaust direction. Removable screen guard for convenient cleaning. Do not use for vertical terminations

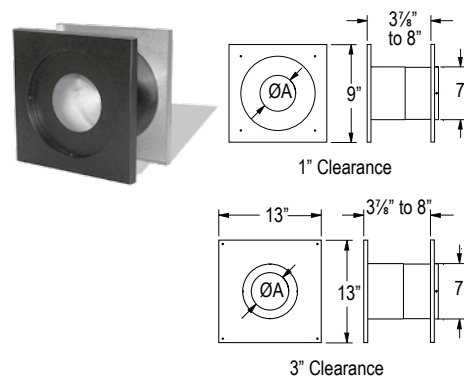
SIZE	STOCK #	A	B	C
3"	3PVP-HRC	3 5/8"	4 1/2"	4 3/4"
4"	4PVP-HRC	3 7/8"	5 1/8"	5 5/8"



## WALL THIMBLE

Provides required clearance to combustibles. Two sizes available, for 1" listed clearance use WT stock# and for 3" listed clearance use WT3. Fits between standard wall studs.

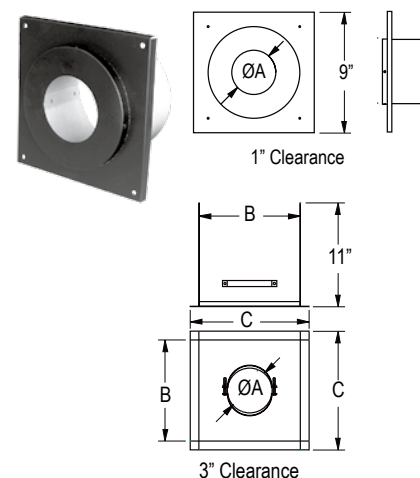
SIZE	STOCK #	A
1" Clearance		
3"	3PVP-WT	3 3/4"
4"	4PVP-WT	4 3/4"
3" Clearance		
3"	3PVP-WT3	3 3/4"
4"	4PVP-WT3	4 3/4"



## CEILING SUPPORT FIRESTOP SPACER

Required where vent passes through a floor or ceiling. Centers pipe to provide proper clearances. Painted black.

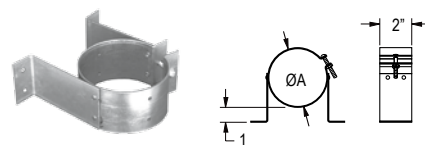
SIZE	STOCK #	A	B	C
1" Clearance				
3"	3PVP-FS	3 3/4"	--	--
4"	4PVP-FS	4 3/4"	--	--
3" Clearance				
3"	3PVP-FS3	3 3/4"	9 5/8"	11 5/8"
4"	4PVP-FS3	4 3/4"	10 5/8"	12 5/8"



## WALL STRAP

Use to support tee sections or as a wall strap. Provides 1" clearance.

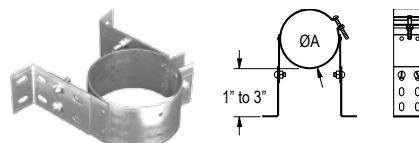
SIZE	STOCK #	A
3"	3PVP-WS	3 $\frac{5}{8}$ "
4"	4PVP-WS	4 $\frac{5}{8}$ "



## ADJUSTABLE WALL STRAP

Use to support tee sections or as a wall strap. Adjusts to provide 1" to 3" clearance.

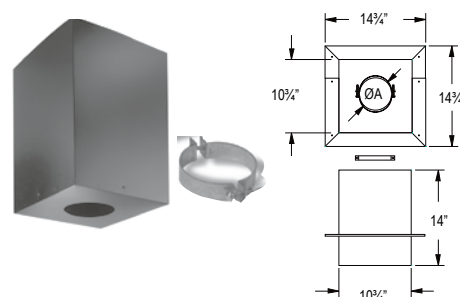
SIZE	STOCK #	A
3"	3PVP-WSA	3 $\frac{5}{8}$ "
4"	4PVP-WSA	4 $\frac{5}{8}$ "



## CATHEDRAL CEILING SUPPORT BOX

Use to support pipe. May be used on flat ceilings. Painted black. Trim and clamp included.

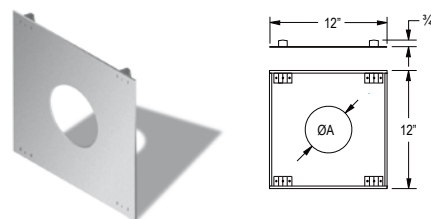
SIZE	STOCK #	A
3"	3PVP-CS	3 $\frac{3}{4}$ "
4"	4PVP-CS	4 $\frac{3}{4}$ "



## HOUSE SHIELD

Use to protect exterior of structure from blower discharge in horizontal venting applications.

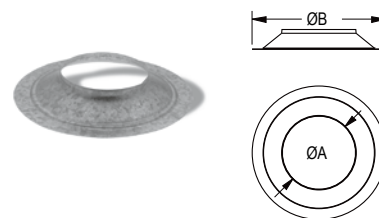
SIZE	STOCK #	A
3"	3PVP-HS	3 $\frac{3}{4}$ "
4"	4PVP-HS	4 $\frac{3}{4}$ "



## STORM COLLAR

Maintains a weather tight resistant seal between the pipe and the flashing. Seal the inner edge with 500° F silicone sealant to the chimney.

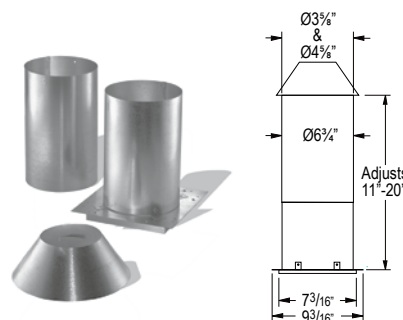
SIZE	STOCK #	A	B
3"	3PVP-SC	3 $\frac{5}{8}$ "	7 $\frac{3}{8}$ "
4"	4PVP-SC	4 $\frac{5}{8}$ "	8 $\frac{1}{8}$ "



## ATTIC INSULATION SHIELD

Required for installations that pass through an attic to prevent insulation and debris from accumulating near the vent. Provides 1" clearance to combustibles. Note: In Canada, Attic Insulation Shield does not provide sufficient clearance for use with pellet- or corn-burning applications (3" clearance is required in Canada.)

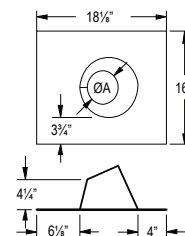
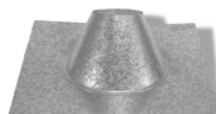
SIZE	STOCK #
3"	3PVP-IS
4"	4PVP-IS



## ADJUSTABLE ROOF FLASHING

For pitches of 0/12 - 6/12. For steep roof pitches and D.S.A., refer to the Gas Vent catalog.

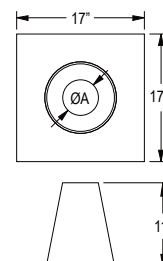
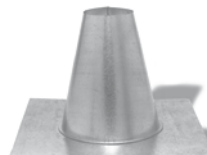
SIZE	STOCK #	A
3"	3PVP-F6	3¾"
4"	4PVP-F6	4¾"



## TALL CONE ROOF FLASHING

Use on flat roofs, chase enclosures, or masonry chimney.

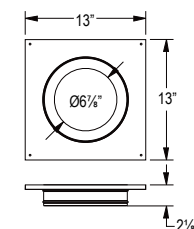
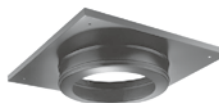
SIZE	STOCK #	A
3"	3PVP-FF	3¾"
4"	4PVP-FF	4¾"



## CEILING SUPPORT/ WALL THIMBLE COVER

Use in conjunction with reduction collar. Decorative cover, painted black, for ceiling support boxes and wall thimbles.

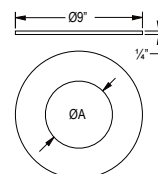
SIZE	STOCK #
3" or 4"	3PVP-WTC



## REDUCTION COLLAR

Reduces the center hole diameter in the Ceiling Support /Wall Thimble Cover to fit 3- or 4-inch pipe. Painted black.

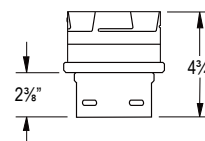
SIZE	STOCK #	A
3"	3PVP-RC	3¾"
4"	4PVP-RC	4¾"



## INCREASER

Allows transition from 3" to 4" pipe sections. Not a decreaser.

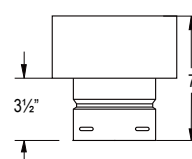
SIZE	STOCK #
3" - 4"	3PVP-X4



## CHIMNEY ADAPTER

Transitions between PelletVent Pro to existing chimney such as DuraTech, DuraPlus or DuraPlus HTC. Requires a DVL/DuraBlack Chimney Adapter to fasten into support box or wall thimble, for 6", use adapter 8674, for 8", use adapter 8874.

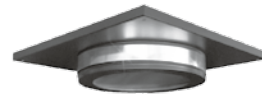
SIZE	STOCK #
3" - 6"	3PVP-X6
3" - 8"	3PVP-X8
4" - 6"	4PVP-X6
4" - 8"	4PVP-X8



## ROUND CEILING SUPPORT/WALL THIMBLE COVER TRIM KIT

Covers round base and square trim collar with polished brass designer trim. Use with Ceiling Support Cover/ Wall Thimble Cover.

SIZE	STOCK #
3" or 4"	3PVP-TKB



## CATHEDRAL CEILING SUPPORT BOX TRIM KIT

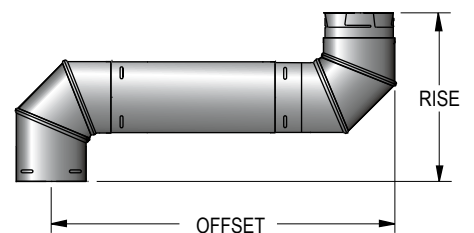
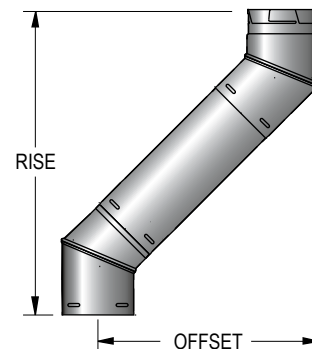
Covers support box and trim collar with polished brass designer trim. Use with Cathedral Support Box.

SIZE	STOCK #
3" or 4"	3PVP-TKA



## PELLETVENT PRO OFFSET CHART

Elbow Angle from Vertical	Chimney Length Between Elbows	Ø3" Offset	Ø3" Rise	Ø4" Offset	Ø4" Rise
45°	0"	4¼"	11"	5"	12¼"
45°	6"	8"	14¾"	8⅝"	16⅝"
45°	12"	12¼"	19"	13½"	21⅝"
45°	24"	20¼"	27⅝"	21⅝"	29⅝"
45°	36"	29¼"	36"	30⅝"	38⅝"
45°	24" + 24"	36⅝"	43⅝"	37¾"	45½"
45°	60"	46⅝"	52⅝"	46¾"	54½"
45°	36" + 36"	53½"	60⅝"	54¼"	62"
90°	0"	9⅝"	10⅝"	10⅝"	11⅝"
90°	6"	14⅝"	10⅝"	15⅝"	11⅝"
90°	12"	20⅝"	10⅝"	21⅝"	11⅝"
90°	24"	32⅝"	10⅝"	33⅝"	11⅝"
90°	36"	44⅝"	10⅝"	45⅝"	11⅝"
90°	24" + 24"	54⅝"	10⅝"	55⅝"	11⅝"
90°	60"	68⅝"	10⅝"	69⅝"	11⅝"
90°	36" + 36"	78⅝"	10⅝"	79⅝"	11⅝"







## WARRANTY



### SIMPSON DURA-VENT LIMITED LIFETIME WARRANTY

Simpson Dura-Vent ("Simpson") warrants the products identified below to the original purchaser to be free from substantial defects in material or manufacturing for the lifetime of the product, if properly installed, maintained and used. This Warranty does not cover normal wear and tear, smoke damage or damage caused by chimney fires, or any Product that was: (1) purchased other than from an authorized Simpson dealer, retailer or distributor; (2) modified or altered; (3) improperly serviced, inspected or cleaned; or (4) subject to negligence or any use not in accordance with the printed materials provided with the Product as determined by Simpson. This lifetime warranty applies only to parts manufactured by Simpson Dura-Vent. This warranty may not be extended or modified by our agents or representatives.

For 15 years from the date of purchase of a **DuraTech** Chimney, **DuraPlus** Chimney, **DuraPlus HTC** Chimney, **PelletVent Pro**, **PelletVent**, **CornVent**, **DuraLiner**, **DuraFlex**, **DirectVent GS**, **Type B Gas Vent**, **DuraConnect** or **DVL**, with dated proof of purchase, Purchaser's sole remedy is replacement of component fittings and chimney pipe lengths (removal and installation costs paid by Purchaser). From year 16, for the life of such Product, Purchaser's sole remedy is replacement of chimney pipe lengths at 50% of the retail list price in effect at the time of replacement (removal and installation costs and 50% of the retail list price paid by Purchaser).

For 5 years from the date of purchase of a **DuraBlack** Single-Wall Stovepipe, with dated proof of purchase, Purchaser's sole remedy is replacement of component fittings and chimney pipe lengths (removal and installation costs paid by Purchaser). From year 6, for the life of such Product, Purchaser's sole remedy is replacement of chimney pipe lengths at 50% of the retail list price in effect at the time of replacement (removal and installation costs and 50% of the retail list price paid by Purchaser).

Simpson may inspect your Product to determine if, in Simpson's sole discretion, the Product qualifies for replacement under the terms of this Warranty. To obtain warranty service go to [www.duravent.com](http://www.duravent.com) or contact Simpson promptly at 800-835-4429. The replaced Product is warranted under the terms of this Warranty.

**Where lawful, Simpson disclaims all other warranties, including but not limited to implied warranties of merchantability and fitness for a particular purpose. In no event will Simpson be liable for incidental, consequential, punitive or special damages or direct or indirect loss of any kind, including but not limited to property damage and personal injury. Simpson's entire liability is limited to the purchase price of this product. Some states do not allow limitations on implied warranties, or the exclusion or limitation of incidental or consequential damages, so the above limitations and exclusions may not apply to you. This limited warranty gives you specific legal rights, and you may also have other rights that vary from state to state.**



[www.duraprodealer.com](http://www.duraprodealer.com)

Customer Service Support  
800-835-4429  
707-446-4740 Fax  
[www.duravent.com](http://www.duravent.com)



Simpson Dura-Vent is a division of Simpson Manufacturing Company. NYSE:SSD. Made in the USA. 800-835-4429 707-446-4740 fax [www.duraprodealer.com](http://www.duraprodealer.com)